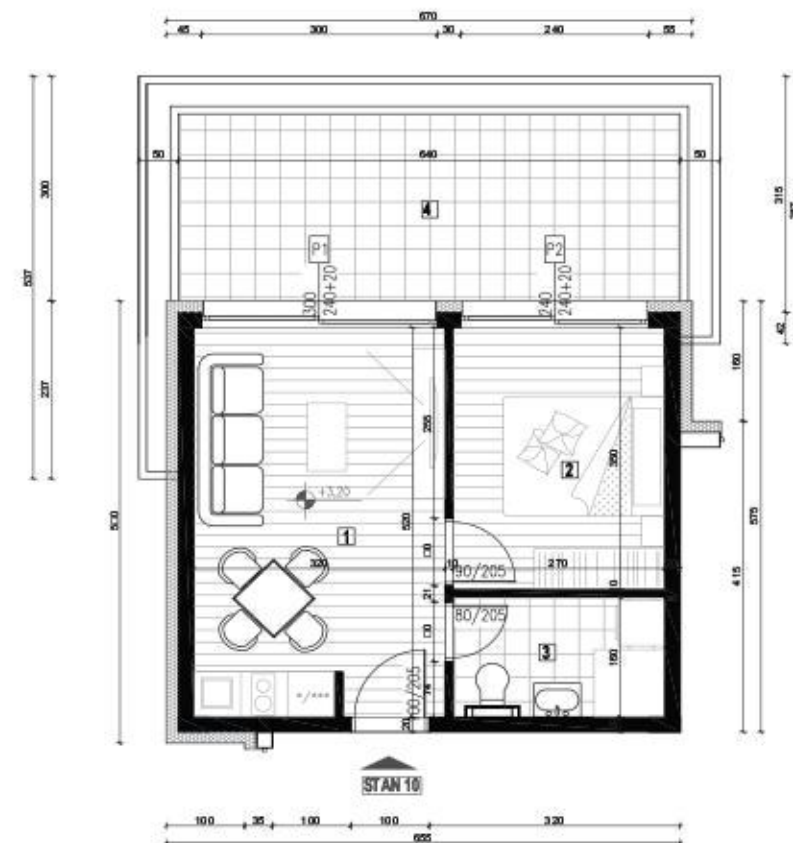
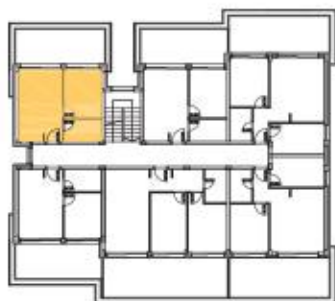




APARTMAN 10 | PRVI SPRAT | 44,96m²



POZICIJA U STAMBENOJ JEDINICI:



PRVI SPRAT

R.br.	Naziv prostorije	P (m ²)	Obrada poda
1.	Dn.boravak sa kuh.i trp.	16,58	k.pl./višeslojni parket
2.	Soba	9,45	višeslojni parket
3.	Kupatilo	4,32	ker. pločice
4.	Terasa	16,00	ker. pločice
UKUPNO		46,35 m² - 3% = 44,96 m²	