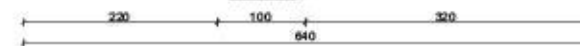
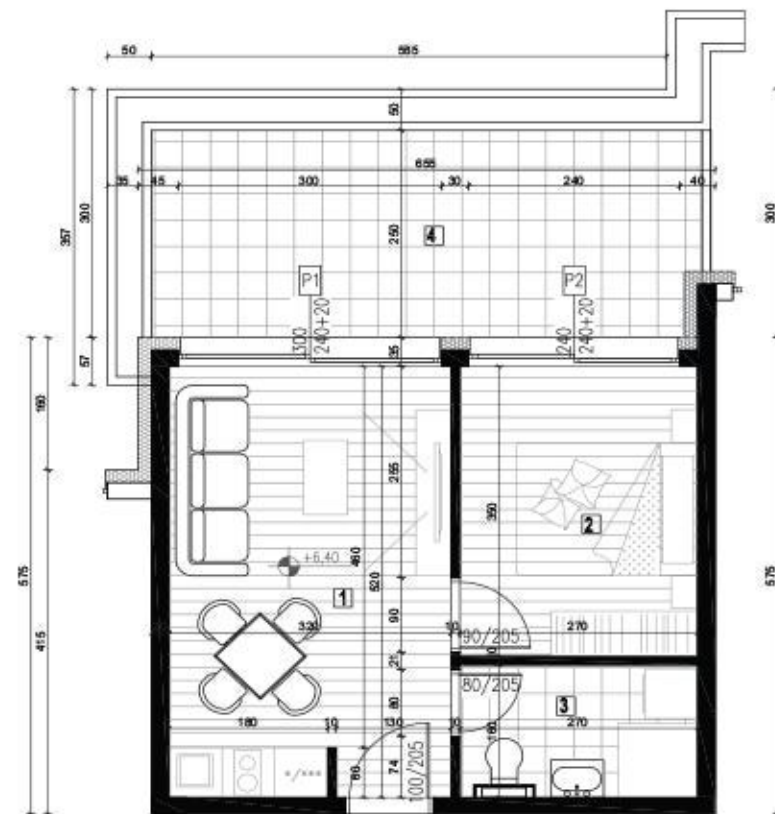
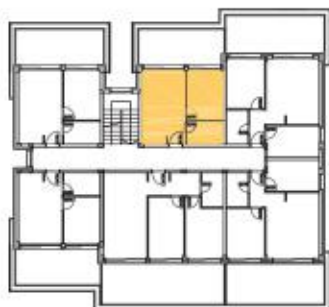




APARTMAN 17 | DRUGI SPRAT | 44,44m²



POZICIJA U STAMBENOJ JEDINICI:



DRUGI SPRAT

R.br.	Naziv prostorije	P (m ²)	Obrada poda
1.	Dn.boravak sa kuh.i trp.	16,58	k.pl./višeslojni parket
2.	Soba	9,45	višeslojni parket
3.	Kupatilo	4,32	ker. pločice
4.	Terasa	15,46	ker. pločice
UKUPNO		45,81 m² - 3% = 44,44 m²	